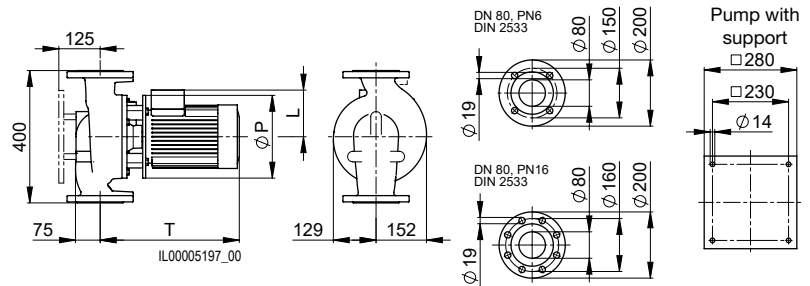


VariA 80-7 400 4 1.1
VariA 80-8.5 400 4 1.5
VariA 80-10 400 4 2.2
VariA 80-14 400 4 3

Nominal diameter	DN 80
Overall length	400 mm
Flanged connection	PN 16 (Auf Anfrage PN6)
Max. operating pressure	10 bar
Ambient temperature	0°C ... +40°C
Medium temperatures RED	+15°C ... +140°C
Medium temperatures GREEN 2	-20°C ... +90°C
Glycol proportion RED	≤25%
Glycol proportion GREEN 2	≤50%



Type	T	P	L	Weight	Motor
VariA 80-7 400 4 1.1	375	200	132	49.0 kg	90S
VariA 80-8.5 400 4 1.5	395	200	132	51.0 kg	90L
VariA 80-10 400 4 2.2	468	250	155	55.5 kg	100L
VariA 80-14 400 4 3	468	250	155	58.5 kg	100L

Electrical data
VariA 80-7 400 4 1.1

Absorbed power P_2	1.10 kW
Nominale stroom	2.30 A

VariA 80-8.5 400 4 1.5

Absorbed power P_2	1.50 kW
Nominale stroom	3.60 A

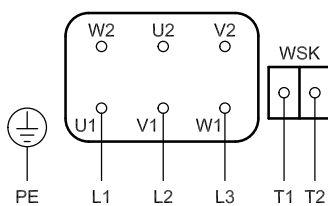
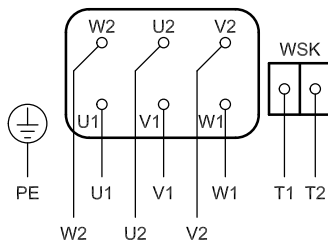
VariA 80-10 400 4 2.2

Absorbed power P_2	2.20 kW
Nominale stroom	4.90 A

VariA 80-14 400 4 3

Absorbed power P_2	3.0 kW
Nominale stroom	6.50 A

Efficiency class	IE3
Protection type	IP55
Insulation class	F
Voltage / frequency	3x400V / 50 Hz
Motor protection	CTP 150°C
Speed	1450 1/min

Connction diagram
Direct start-up

Y/Δ-start-up


VariA... RED PN 16 without support	Art. No.
VariA 80-7 400 4 1.1	2210420150
VariA 80-8.5 400 4 1.5	2210430150
VariA 80-10 400 4 2.2	2210440150
VariA 80-14 400 4 3	2210450150

